

Connah's Quay Low Carbon Power

Environmental Statement Volume III Figure 8-1: Construction Phase Assessment – Air Quality Study Area and Baseline Monitoring Locations

Planning Inspectorate Reference: EN010166

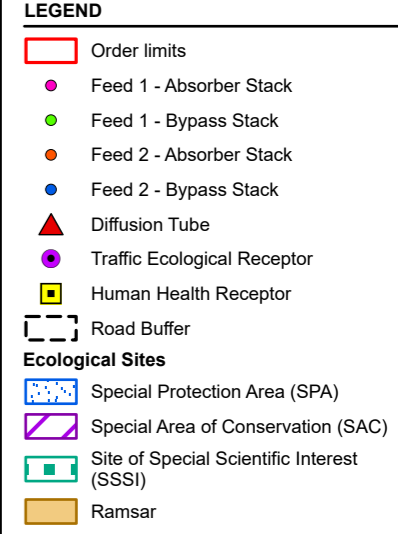
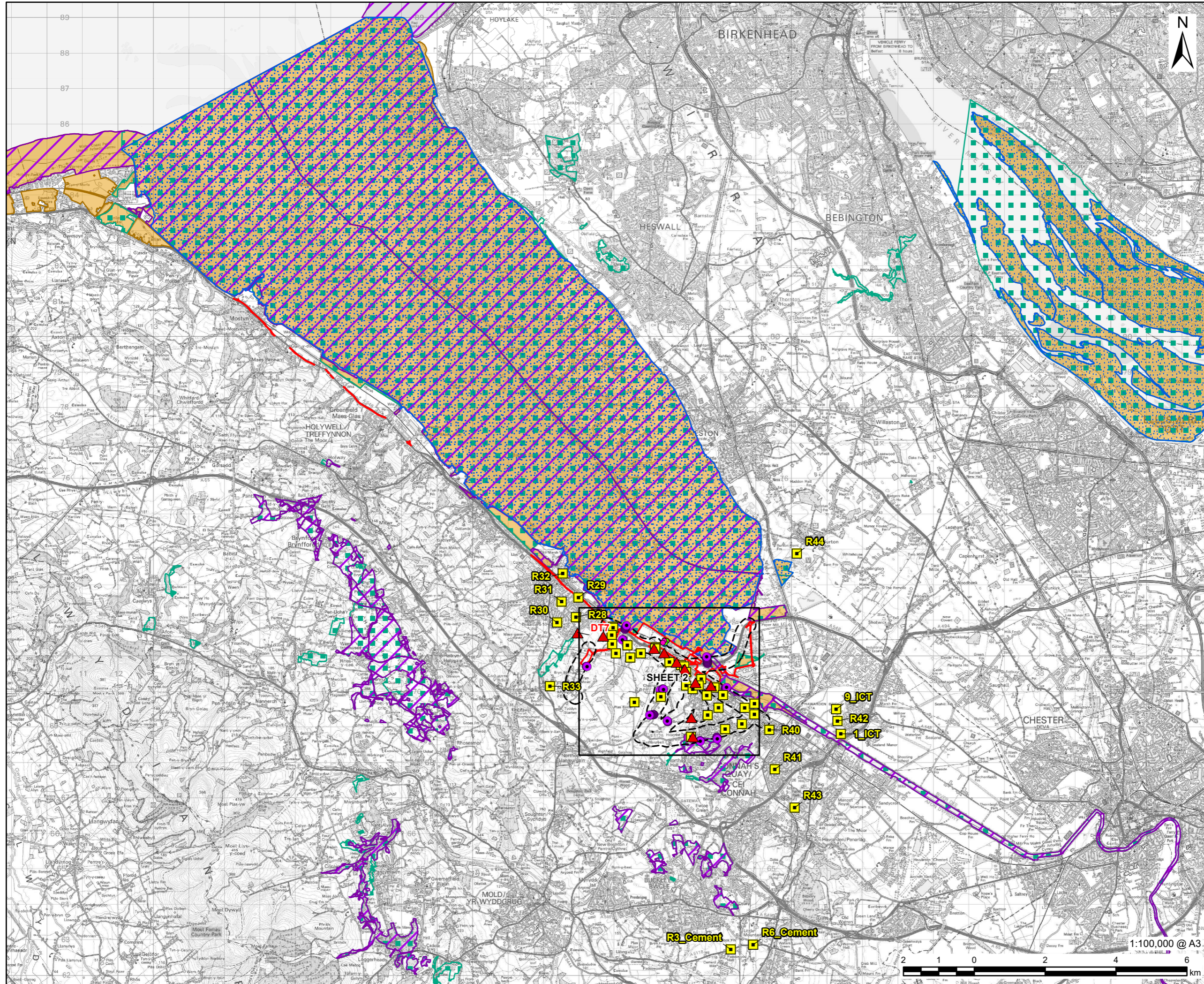
Document Reference: EN010166/APP/6.3

Planning Act 2008 (as amended)

Infrastructure Planning (Applications: Prescribed Forms and Procedure) Regulations
2009 - Regulation 5(2)(a)

Revision 01

March 2026



NOTES

Air Quality Study Area(s), including for specific receptors shown, defined in Section 8.4 of Chapter 8: Air Quality (ES Volume II).
 © Crown Copyright 2025. All rights reserved.
 Ordnance Survey Licence AC0000808122.
 Contains Natural Resources Wales information © Natural Resources Wales and Database Right. All rights reserved.
 Contains Ordnance Survey Data. Ordnance Survey Licence number AC0000849444.
 Crown Copyright and Database Right.
 © Natural England copyright. Contains Ordnance Survey data © Crown copyright and database right 2024.

ISSUE PURPOSE
 Environmental Statement

DATE
 March 2026

PROJECT NUMBER
 60768754

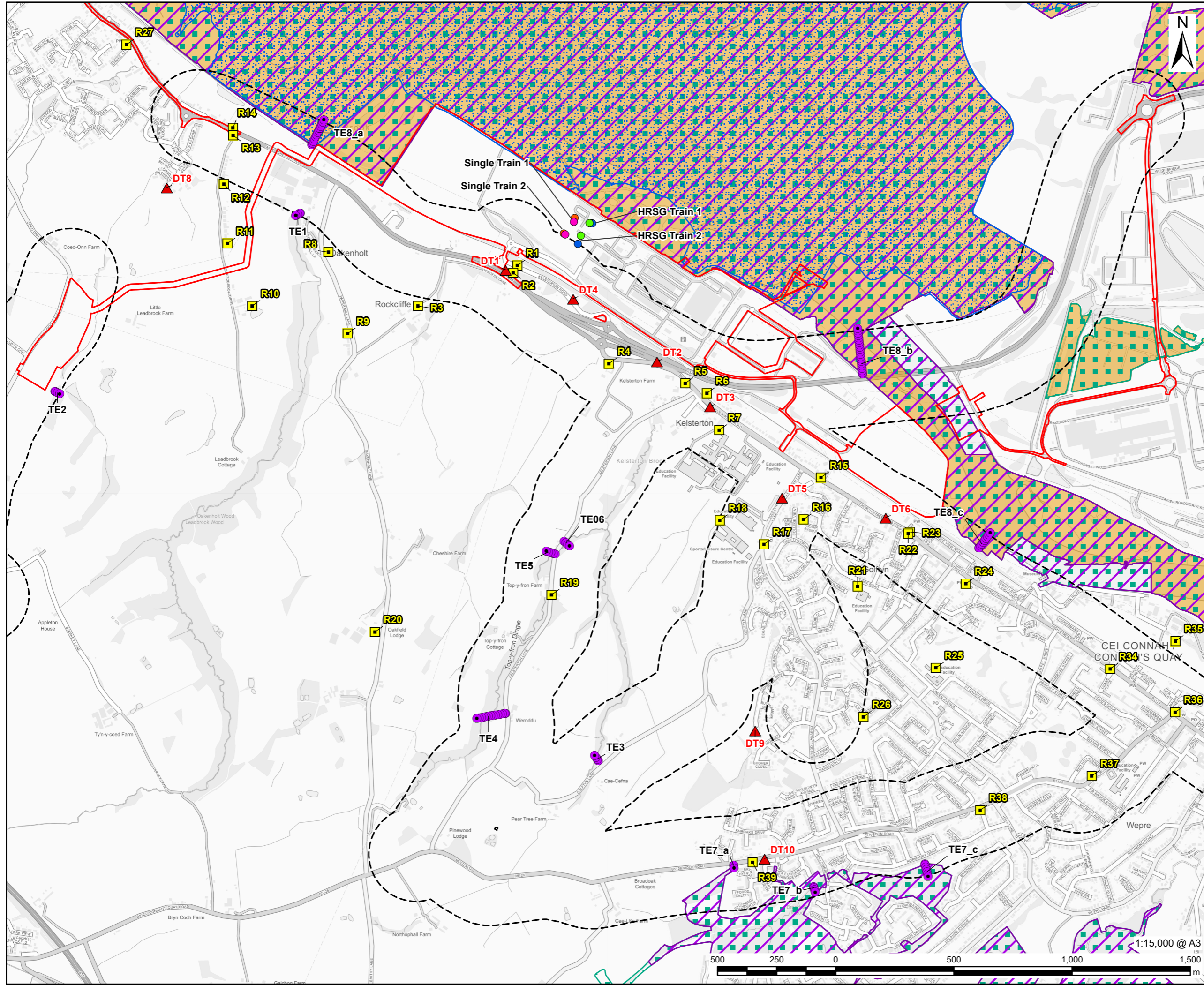
FIGURE TITLE
 Construction Phase Assessment – Air Quality Study Area and Baseline Monitoring Locations
 Sheet 1 of 2

FIGURE NUMBER
 Figure 8-1

This drawing has been prepared for the use of AECOM's client. It may not be used, modified, reproduced or relied upon by third parties, except as signed by AECOM or as required by law. AECOM accepts no responsibility, and denies any liability whatsoever, to any party that uses or relies on this drawing without AECOM's express written consent. Do not scale this document. All measurements must be obtained from the stated dimensions.

LEGEND

	Order limits
	Feed 1 - Absorber Stack
	Feed 1 - Bypass Stack
	Feed 2 - Absorber Stack
	Feed 2 - Bypass Stack
	Diffusion Tube
	Traffic Ecological Receptor
	Human Health Receptor
	Road Buffer
Ecological Sites	
	Special Protection Area (SPA)
	Special Area of Conservation (SAC)
	Site of Special Scientific Interest (SSSI)
	Ramsar



NOTES

Air Quality Study Area(s), including for specific receptors shown, defined in Section 8.4 of Chapter 8: Air Quality (ES Volume II).
 © Crown Copyright 2025. All rights reserved.
 Ordnance Survey Licence AC0000808122.
 Contains OS data © Crown copyright 2025.
 Contains Natural Resources Wales information © Natural Resources Wales and Database Right. All rights Reserved.
 Contains Ordnance Survey Data. Ordnance Survey Licence number AC0000849444.
 Crown Copyright and Database Right.
 © Natural England copyright. Contains Ordnance Survey data © Crown copyright and database right 2024.

ISSUE PURPOSE
 Environmental Statement

DATE
 March 2026

PROJECT NUMBER
 60768754

FIGURE TITLE
 Construction Phase Assessment – Air Quality Study Area and Baseline Monitoring Locations
 Sheet 2 of 2

FIGURE NUMBER
 Figure 8-1

This drawing has been prepared for the use of AECOM's client. It may not be used, modified, reproduced or relied upon by third parties, except as signed by AECOM or as required by law. AECOM accepts no responsibility, and denies any liability whatsoever, to any party that uses or relies on this drawing without AECOM's express written consent. Do not scale this document. All measurements must be obtained from the stated dimensions.